



The Awesomely Amazing Science club

WHIZZ
POP
BANG!

WEEK 5 BRIDGES

Pupil activity

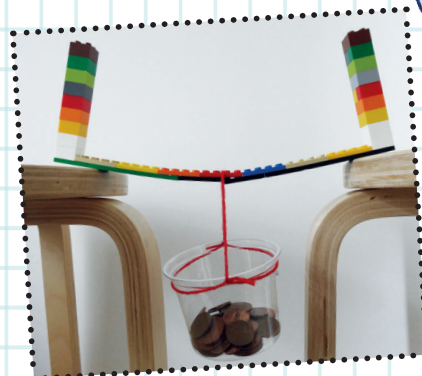
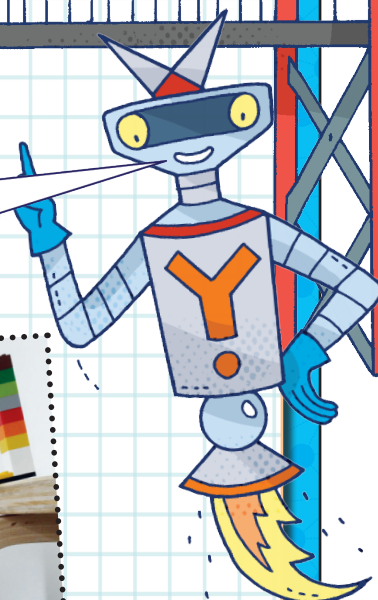
You will need:

- Lego
- Coins
- Two chairs or stools
- Plastic pot
- String or wool

What you do:

Build a beam with the flat Lego pieces. We used 15 pieces. Add a tower at each end. Bridge the gap between two chairs or stools. Hang the pot from the centre of the beam. How many coins can you add before the bridge bows or breaks?

Spend the next two weeks making bridges and then designing your own.



Now turn your beam bridge into a suspension bridge. Loop a long piece of wool or string around the centre of the beam, and over each tower. Anchor the ends by tying them around the chair or stool legs. How many coins can you add to the pot this time?

WEEK 6

Engineering Challenge

Design and make your own bridge. This time don't make it out of Lego. You can use whatever materials are available. For example, you could choose to fold paper or use kitchen roll tubes. The challenge is to see whose is the strongest. Each bridge should be tested in the same way (you could use coins, like before). Record the results in a table so you can make simple comparisons.

