



HEART CARD

Follow the instructions to make your own heart card.

You will need:

- Scissors
- Glue
- A pen

What you do:

1. Cut out the two card shapes and three flaps.
2. Stick the card shapes back-to-back with glue.
3. Attach the tabs to the card where shown, using glue.
4. Fold in the two sides of the cards, along lines A.
5. Fold the sides back, along lines B.
6. Fold the sides in towards the centre, along lines C.
7. Write your message on the back and you're ready to send your card.

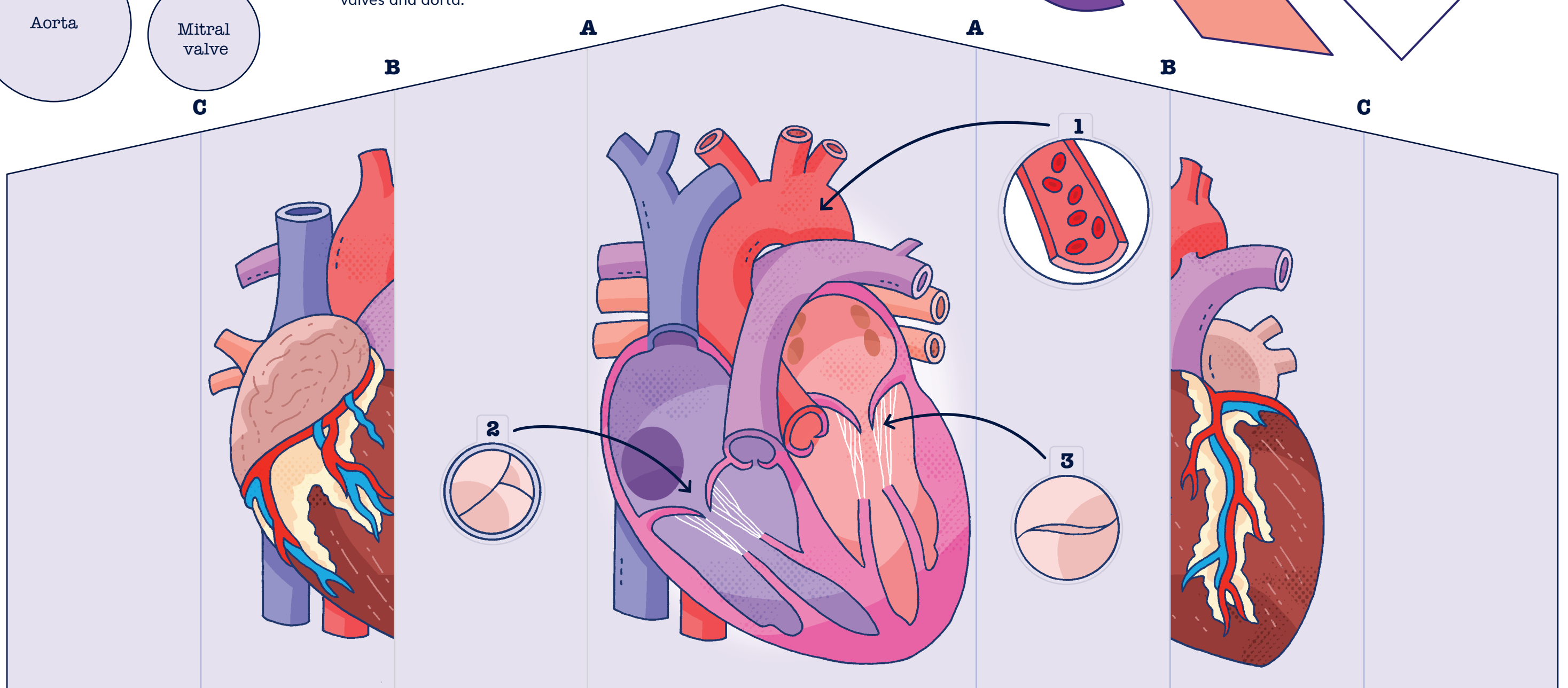
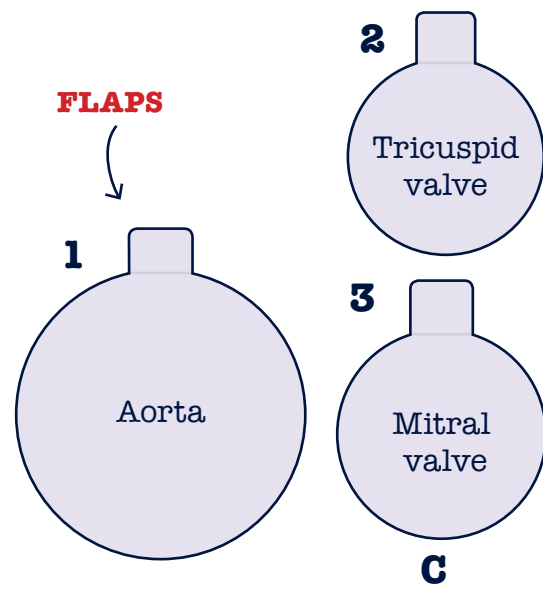
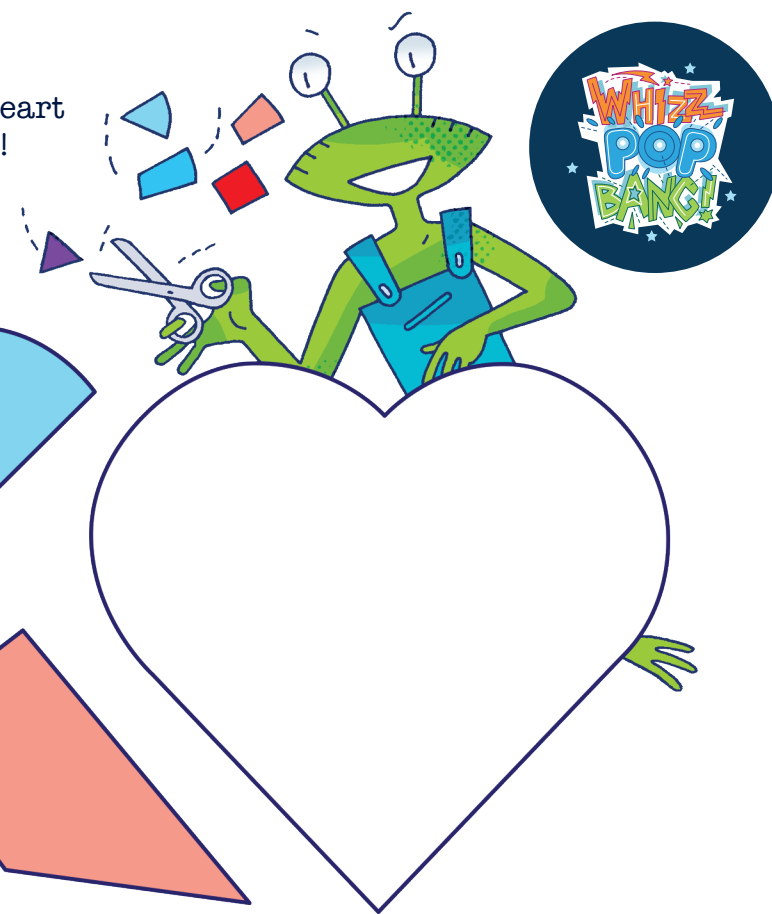
You should find:

If you lift the two front folds of the card, you can see the outside of a human heart. When you open the card right up, you can see inside it!

Lift the flaps to get a close-up view of the heart's valves and aorta.



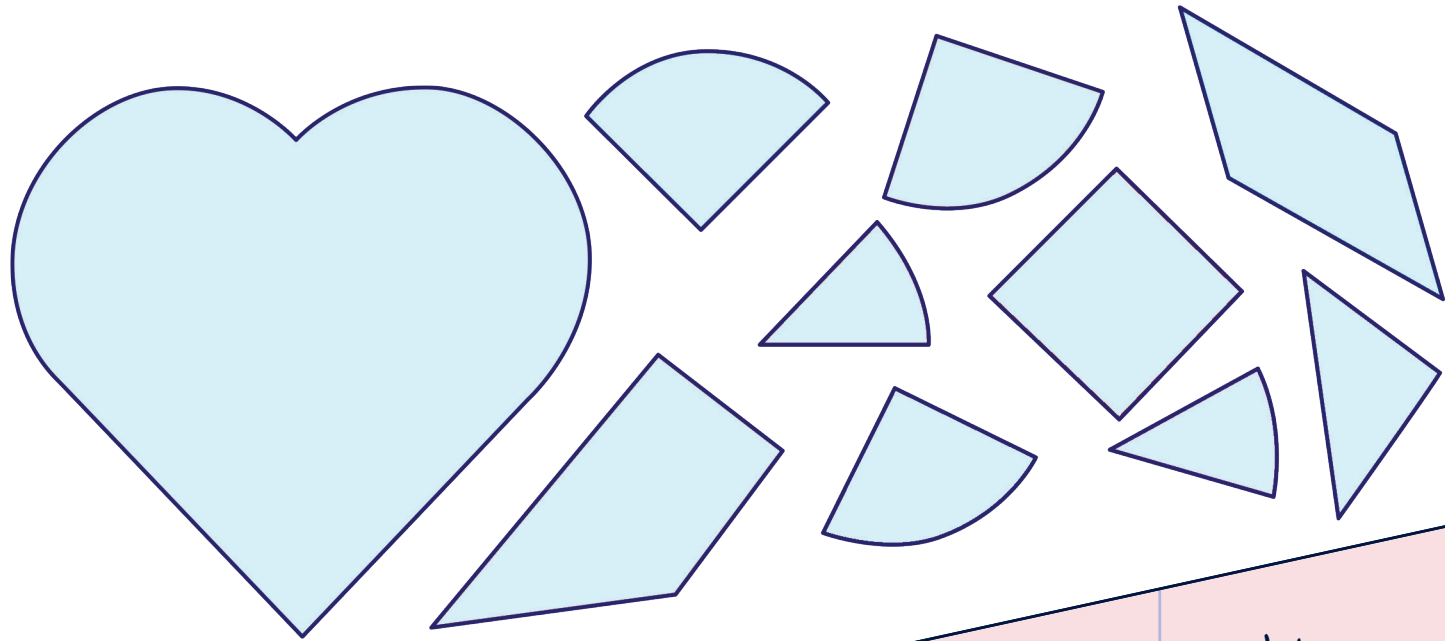
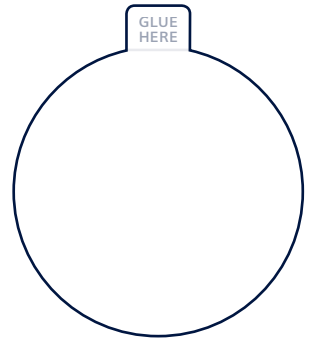
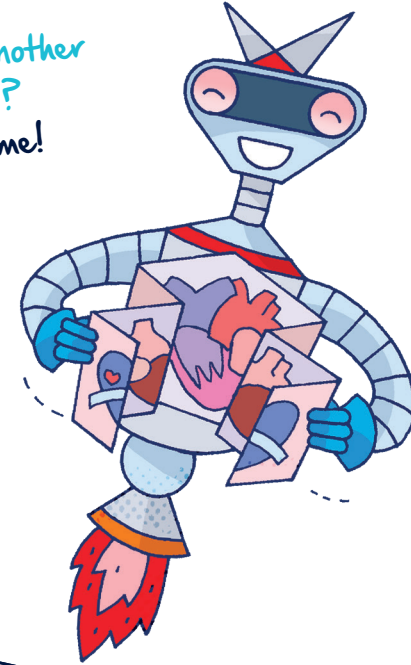
Cut out the pieces of this broken heart and put them back together again!





Two blood cells met and
fell in love, ...but alas,
it was all in vein!

What did one cat say to another
cat on Valentine's day?
You're purrrr-fect for me!



Write your
message here

